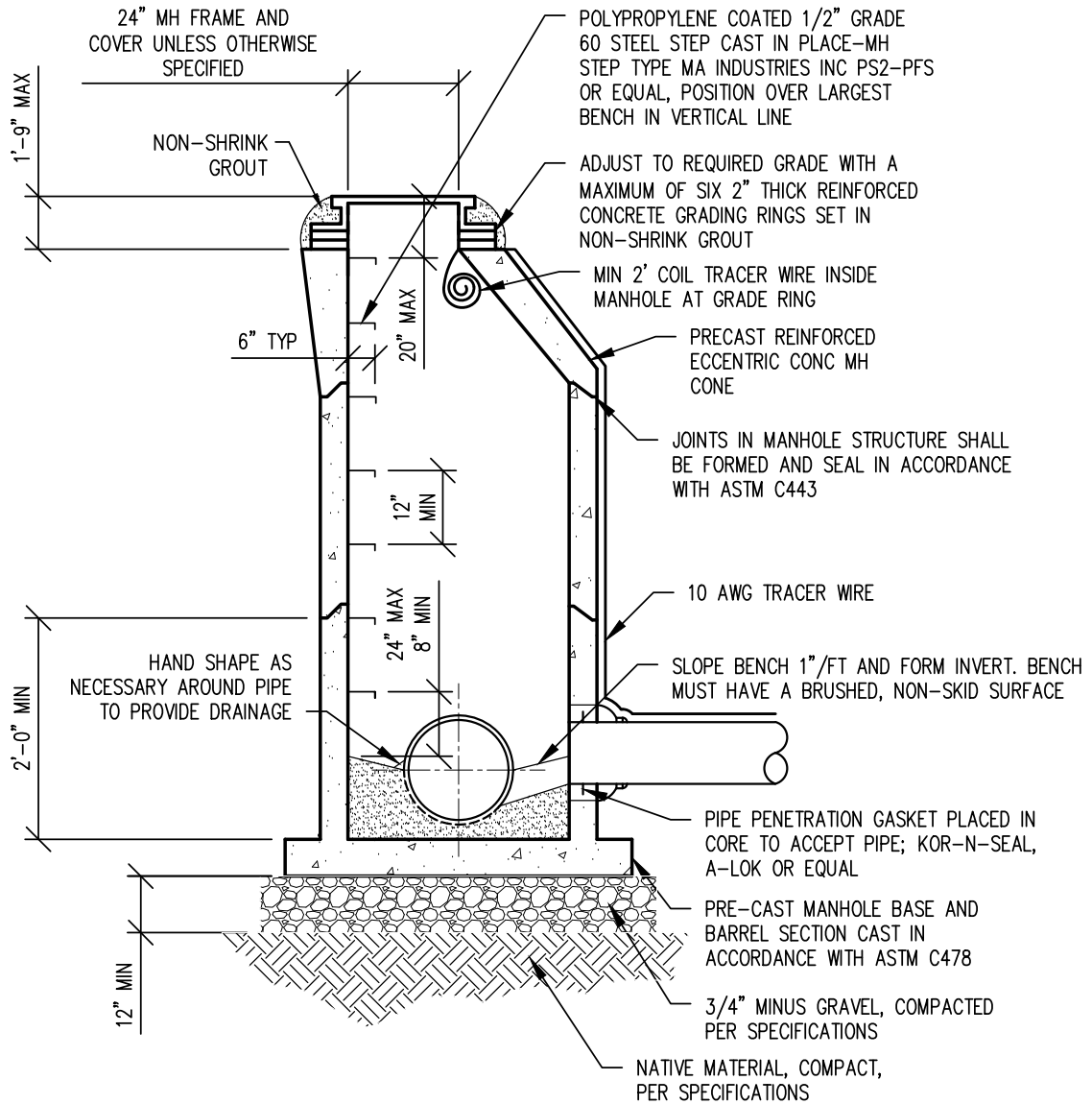


## Appendix B Construction Specifications



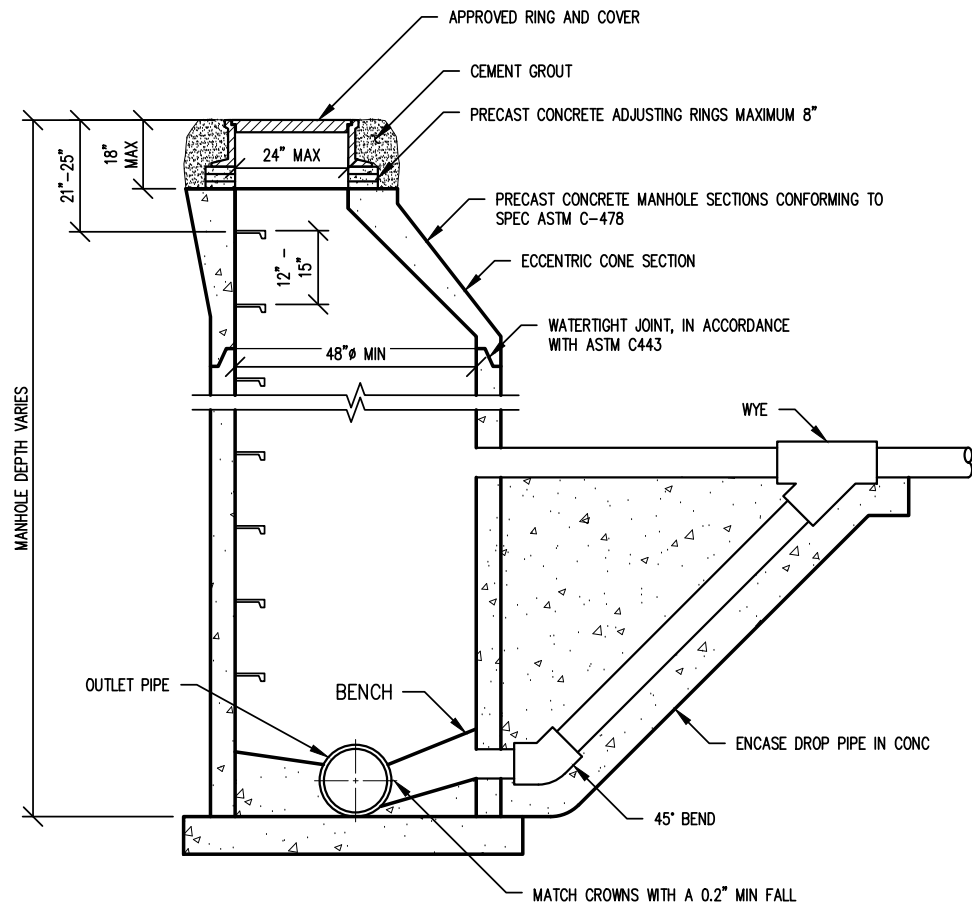
SCALE: NTS

FIGURE 1

TOWN OF PAGOSA SPRINGS  
STANDARD SEWER MANHOLE



W:\PSSD-0283 - CONST. SPEC\Figures\FIGURE 2 LAST SAVED-9/20/2018 7:44 AM LAST PLOTTED: 10/19/2018 2:04 PM BY: KEITH

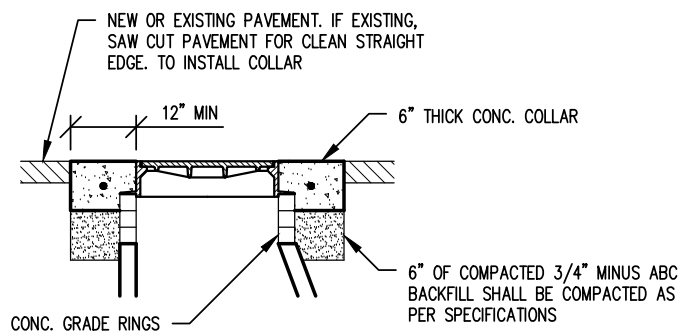
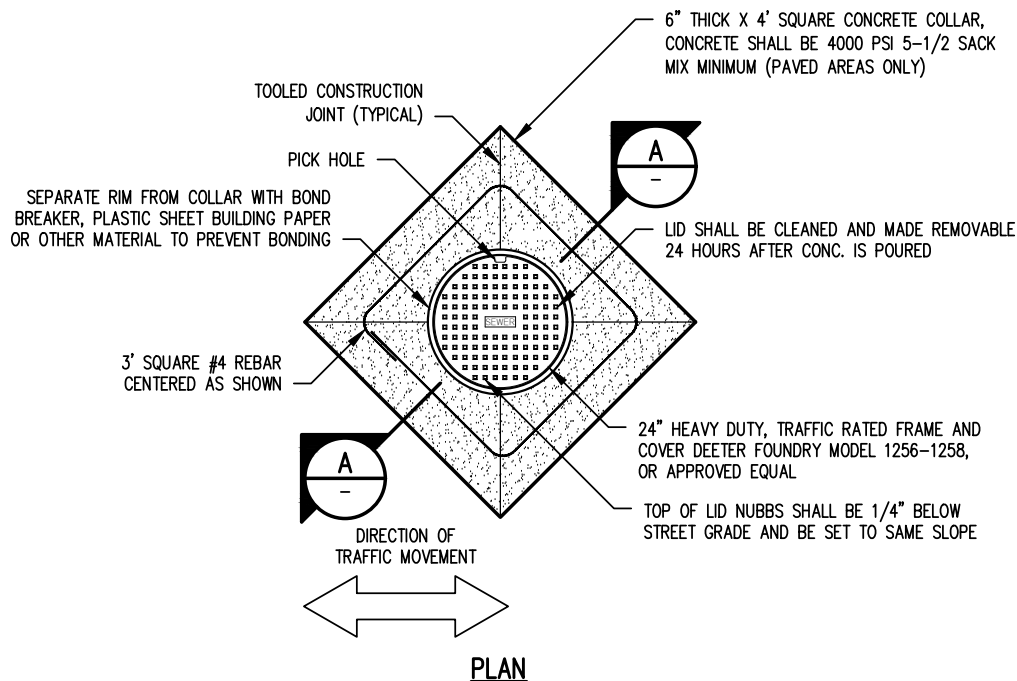


SCALE: NTS

FIGURE 2

TOWN OF PAGOSA SPRINGS  
DROP MANHOLE





#### NOTES:

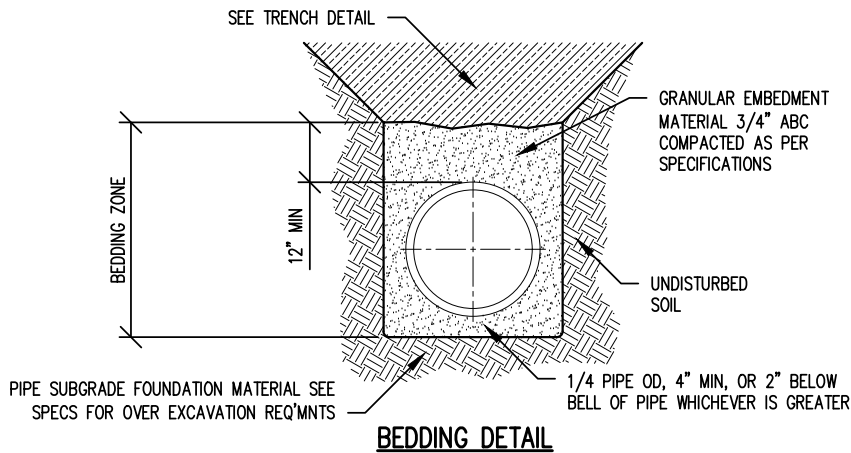
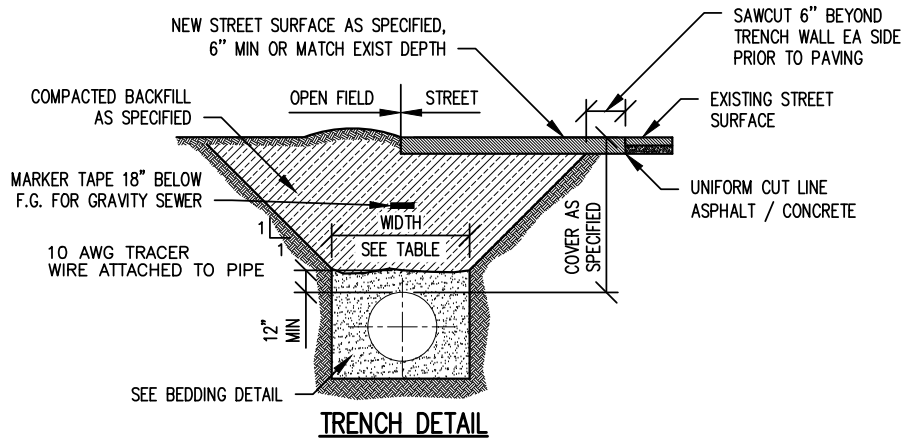
1. RING AND COVER SHALL BE IRON (AS MANUFACTURED FOR CURRENT AWWA STANDARD).
2. SANITARY SEWER MANHOLE COVERS SHALL BE NON PERFORATED WITH "SANITARY SEWER" FORGED ON THE TOP OF THE LID AS SHOWN ABOVE.
3. COVER SHALL BE BOLTED, WATER RESISTANT IF LOCATED IN 100 YEAR FLOOD PLAIN, BACK YARDS, OPEN SPACE AND/OR DITCHES.
4. ALL MANHOLES SHALL BE EQUIVALENT TO DEETER MODEL NUMBER 1256, OR D & L FOUNDRY MODEL A-1480.
5. MANHOLE LID AND RING SHALL BE FURNISHED WITH MACHINED HORIZONTAL BEARING SURFACES.

SCALE: NTS

FIGURE 3

TOWN OF PAGOSA SPRINGS  
MANHOLE RING, COVER, COLLAR





TRENCH WIDTH		
PIPE DIAMETER	MINIMUM WIDTH	MAXIMUM WIDTH
4"	1'-4"	2'-4"
6"	1'-6"	2'-6"
8"	1'-8"	2'-8"
10"	1'-10"	2'-10"
12"	2'-0"	3'-0"
18"	2'-6"	3'-6"
24"	3'-0"	4'-0"

**NOTES:**

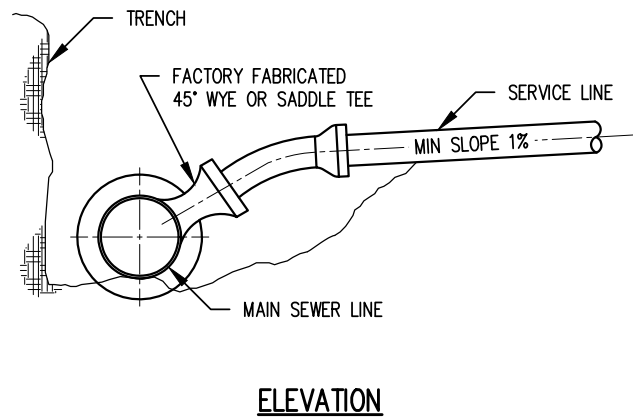
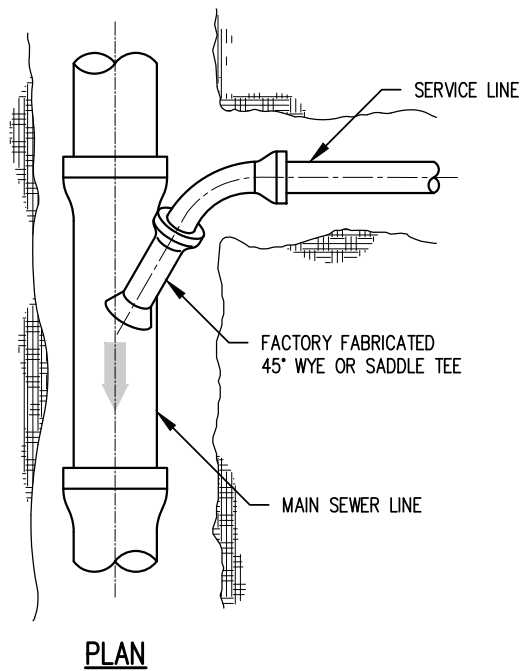
1. FOR TRENCHES GREATER THAN 5 FEET IN DEPTH, SIDEWALLS SHALL BE SLOPED AT 45° ANGLE OR SUITABLY BRACED OR SHEETED AS NECESSARY FOR THE SAFETY OF THE WORKERS AND THE PROTECTION OF OTHER UTILITIES AS REQUIRED BY OSHA. IN UNSTABLE SOIL CONDITIONS, SLOPE TRENCH WALLS ACCORDING TO GEOTECHNICAL RECOMMENDATIONS.
2. MARKER TAPE SHALL BE 6" WIDE, WITH APPROPRIATE COLOR CODING AND NOTATION AS PER SPECIFICATIONS.

SCALE: NTS

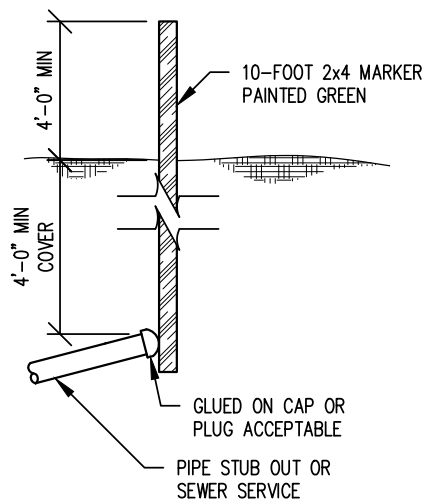
FIGURE 4

TOWN OF PAGOSA SPRINGS  
PIPE TRENCH





### SERVICE CONNECTIONS



### GENERAL NOTES:

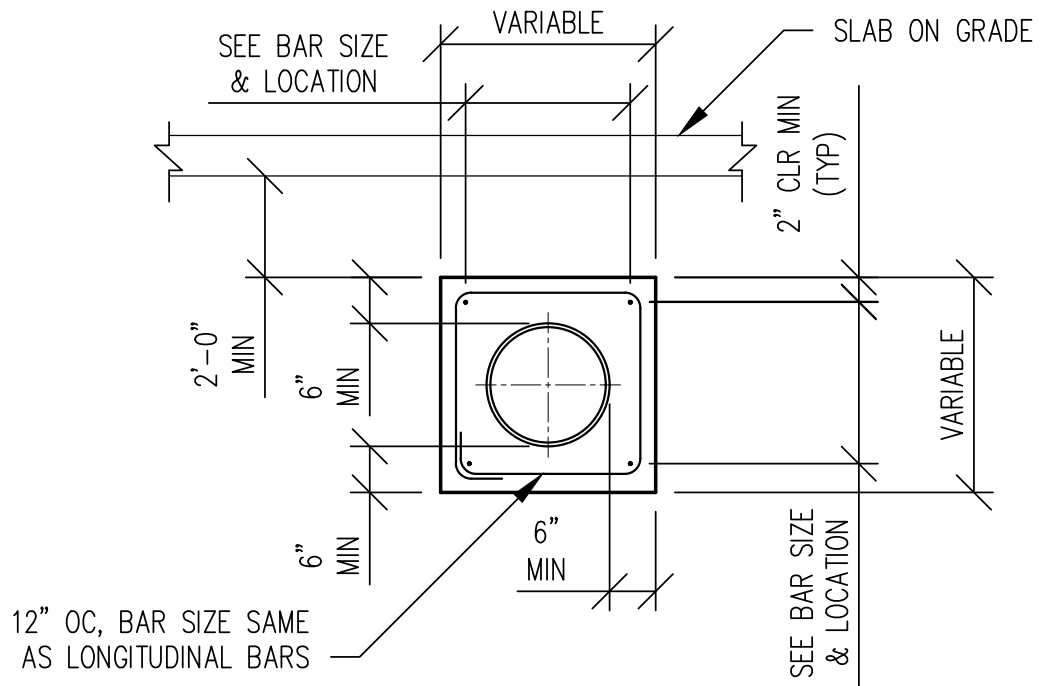
1. SEWER TAP TO BE MADE BY DISTRICT PERSONNEL.
2. SADDLES TO BE APPROVED BY DISTRICT PRIOR TO INSTALLATION.
3. PLACE METALLIC SEWER MARKER TAPE ABOVE SEWER MAINS AND SERVICES.

SCALE: NTS

FIGURE 5

TOWN OF PAGOSA SPRINGS  
SERVICE CONNECTION





PIPE I.D.	NO. OF LONGITUDINAL BARS AND LOCATION	
6"	4 – NO. 4 BARS	1 EACH CORNER
8"	4 – NO. 4 BARS	1 EACH CORNER
10"	8 – NO. 4 BARS	2 EACH SIDE
12"	8 – NO. 4 BARS	2 EACH SIDE
14"	8 – NO. 4 BARS	2 EACH SIDE
15"	8 – NO. 4 BARS	2 EACH SIDE
18"	8 – NO. 5 BARS	2 EACH SIDE
20"	8 – NO. 6 BARS	2 EACH SIDE
24"	8 – NO. 6 BARS	2 EACH SIDE
30"	8 – NO. 7 BARS	2 EACH SIDE

SCALE: NTS

FIGURE 6

TOWN OF PAGOSA SPRINGS  
PIPE ENCASEMENT

